



**APRIL 22, 2011 MEMBERSHIP PRESENTATION**

# WELCOME

Tom McDonough, PhD – W6ZT - Pasadena

Len Larks, DO – WB6QZK – Baldwin Park

Dave Toth – KJ6HZZ - San Diego

Bill Parker, MD – W8QZA – San Diego

Haim Hirsch – KG6TFR – Sherman Way

Paul Fuller, MD – KE6ENG - Kern County

Don Kalde – WB6CGI

Steve Hartranft – KI6SUF – Downey

Ruy Cruz – KI6YOV - Pasadena

Dennis Furhriman – KI6MJY - Downey

Oscar Fong – KC6PSQ

Norman Tor – KB6AKF - Pasadena

# MISSION

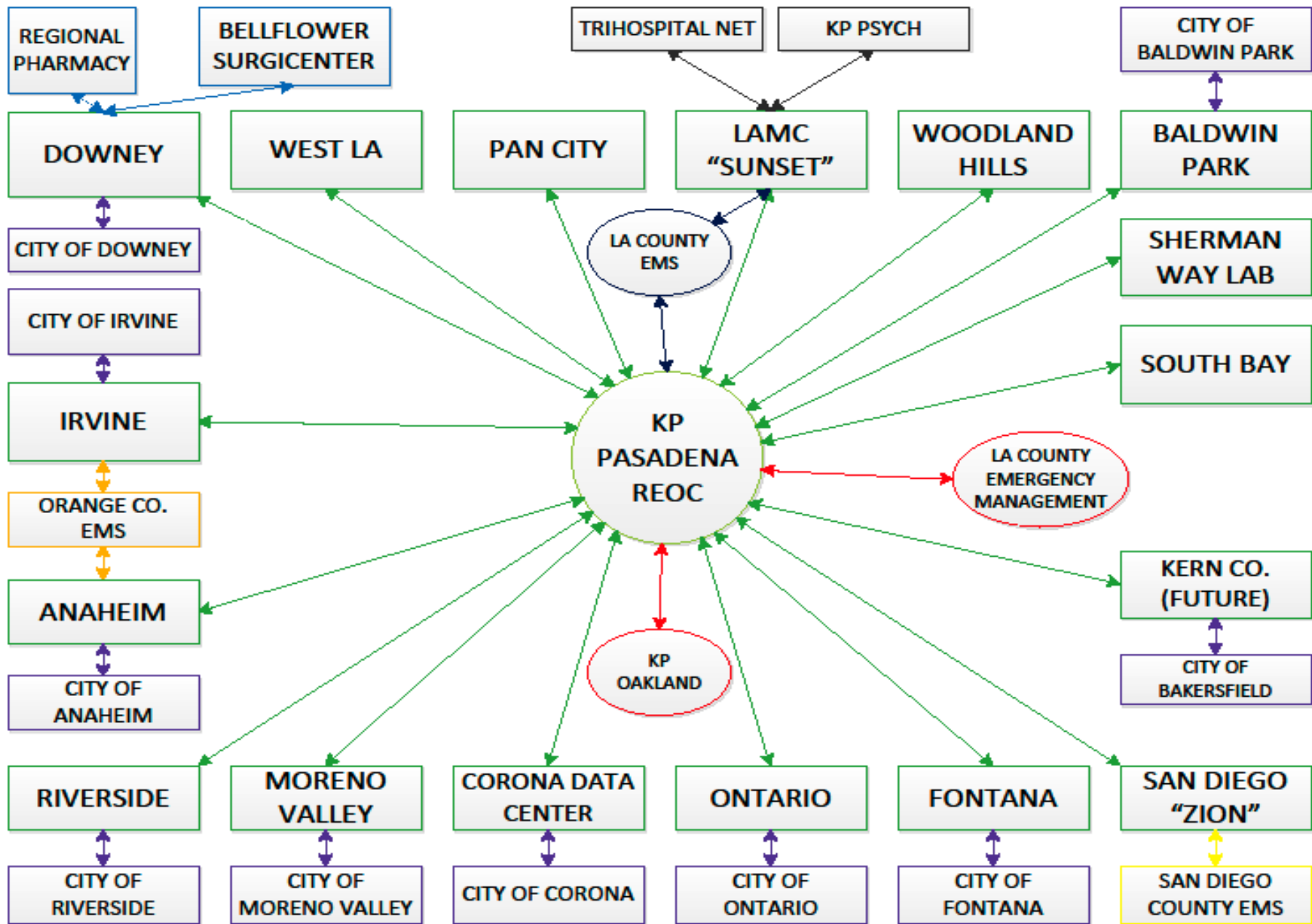
The Kaiser Permanente Amateur Radio Network (KPARN) is an organization of Federal Communication Commission licensed amateur radio operators who volunteer time and technical expertise to support the emergency preparedness mission of Kaiser Permanente Health System through redundant communication technologies.

# **KPARN HOSPITAL “RULES”**

- KP HOSPITAL ID BADGE
- ICS 100, ICS 200 +
- PROPER ATTIRE
  - COLLARED SHIRTS
  - LONG PANTS
  - MAY BE DIFFERENT FOR MEDICAL EVENTS
- CHECK IN WITH INCIDENT COMMANDER & NET CONTROL
- PROPER ATTITUDE (MBA’S, PhD’S, MD’S)
- PROPER LANGUAGE
- CALM
- DRIVE SAFELY – THE DISASTER WILL LAST
- WE ARE HERE TO SUPPORT COMMUNICATIONS
- KPARN “REFERENCE MANUAL” (WEB)
- KEEP NET CONTROL INFORMED

# **KPARN NET ACTIVATION**

- KPARN IS SELF ACTIVATED
- UNLIKE RACES AND ARES ALL OPERATORS HAVE ASSIGNED PRIMARY AND SOMETIMES SECONDARY (HOME) LOCATIONS
- AREA FROM SAN DIEGO TO KERN – SOMETHING COULD HAPPEN AND OTHERS ARE NOT AWARE
- ACTIVATE – BUT LET SOMEONE KNOW YOU ARE ACTIVATING – PHONE CALL, RADIO, ETC
- PRIMARY SELF ACTIVATIONS – SIGNIFICANT (DAMAGE) EARTHQUAKE, FIRE AFFECTING HOSPITAL COMMUNITY, SIGNIFICANT POWER OUTAGE, ANY NEIGHBORHOOD COMMUNICATIONS FAILURE
- PHONE TREE FOR ACTIVATION – IN WORKS
- MIR3 NOTIFICATION SYSTEM – 2012



# NET CONTROL

- TACTICAL CALL SIGN –
  - KPARN NET CONTROL
  - “WALNUT CENTER” OR “PASADENA” (REGIONAL EOC NOT OPERATIONAL)
  - “REGIONAL” WHEN REGIONAL EOC ACTIVATED
- PASADENA - FOUR OPERATOR POSITIONS - DUPLICATE HF, 2M, 6M, 440 RADIOS PLUS 220
- **ALWAYS** MONITORS SIX METER AND TACTICAL UHF NETS – HF NET AS POSSIBLE
- CHECKS IN TO ALL AVAILABLE NETS – ORANGE COUNTY, RIVERSIDE, EARN, ETC AS SOON AS OPERATORS
- OTHER NETS COME TO KPARN – WE PUBLISH OUR SIX METER FREQUENCY

Date of Net:

Operator:

LOCATION

CALL SIGN

FIRST NAME

440

6M

HF

KP - ANAHIEM

--	--	--	--	--	--

KP - BALDWIN PARK

	WB6QZK	LEN			
	KJ6GRW	ELIZABETH			

KP - DOWNEY

	KJ6DDY	SOCORRO			
	KC6PSQ	OSCAR			
	KI6MJY	DENNIS			
	KU6R	JERRY			
	KD6ZKJ	FRANK			
	W6BDH	PAUL			
	WA6YAW	HOWARD			
	KB6CHV	DON			
	KB6MRC	KEN			
	WB6IMV	JIM			
	KJ6KXW	ROSE			

# KPARN “TO DO” LIST

- MOUNTAINTOP STABILITY
- MORE MEMBERS
- TECHNICAL BUILD OUT
- ADDITIONAL REPEATER FREQUENCIES
- PORTLAND, HAWAII AND NORTHERN CA ROUTINE LINKS (HF OR ECHOLINK OR REMOTE RADIOS)
- MEDICAL EVENT SUPPORT
- LIAISON WITH MORE HOSPITALS
- INTEROPERABILITY

# REGIONS OUTSIDE CALIFORNIA

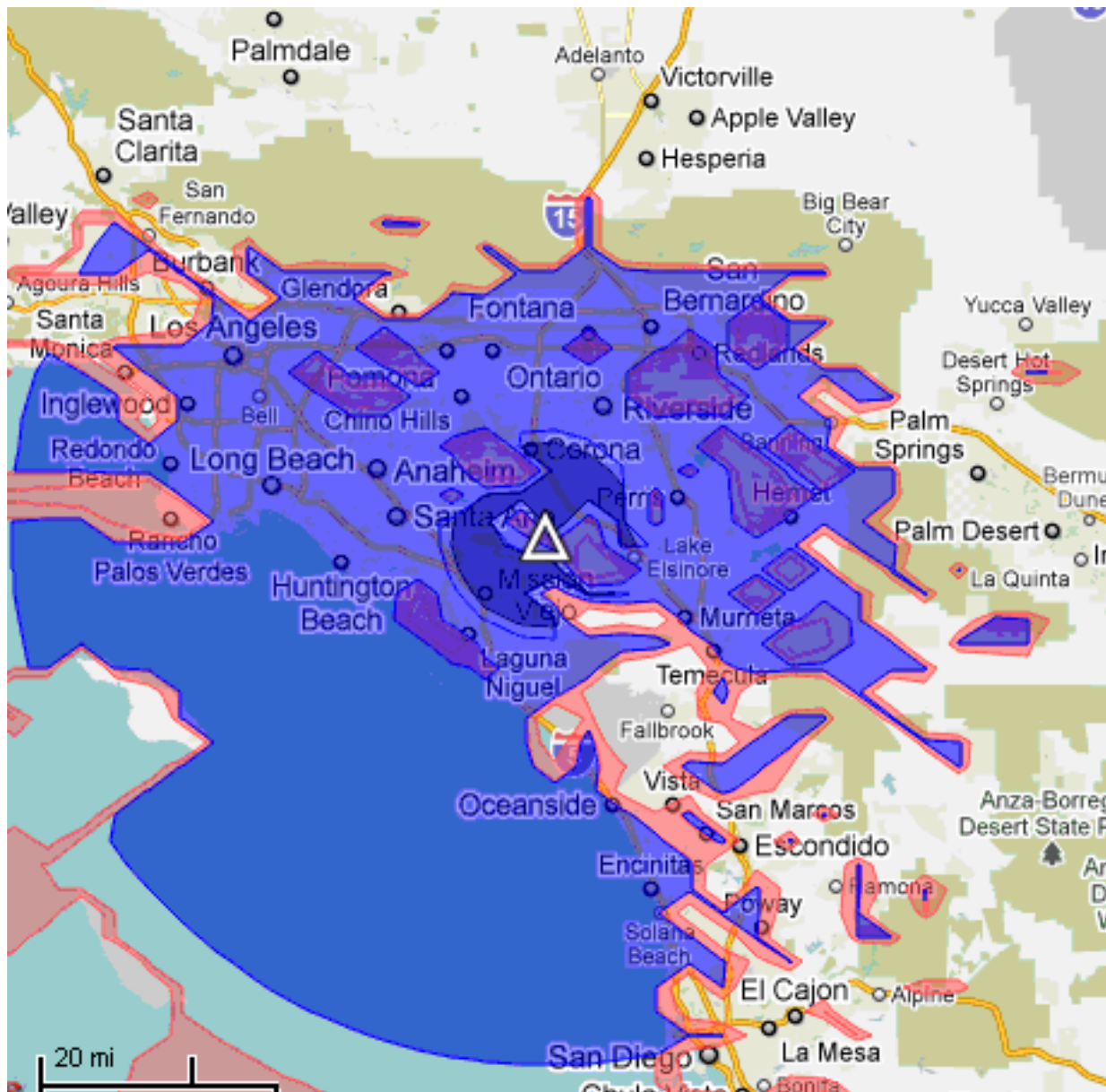
IN CALIFORNIA, KP IS A PARTICIPANT AND LEADER WITH THE BAY AREA HOSPITAL NETWORK (BAHN) IN NORTHERN CA AND WITH KPARN (KAISER PERMANENTE AMATEUR RADIO NETWORK) IN SOUTHERN CALIFORNIA. OTHER REGIONS SUCH AS PORTLAND, HAWAII AND THE WASHINGTON DC AREA HAVE DEFINED LOCAL AMATEUR RADIO HOSPITAL COMMUNICATIONS PROGRAMS.

A FUTURE (NOT FUNDED) CONSIDERATION IS TO ATTEMPT TO LINK MULTIPLE KP REGIONS VIA AMATEUR RADIO. THIS MAY BE ACCOMPLISHED VIA HIGH FREQUENCY (LONG RANGE) COMMUNICATIONS, DIGITAL PROTOCOLS, RADIO OVER INTERNET AND MANY OTHER OPTIONS. TO ASSURE REDUNDANCY MORE THAN ONE OF THESE METHODS MAY BE SELECTED.

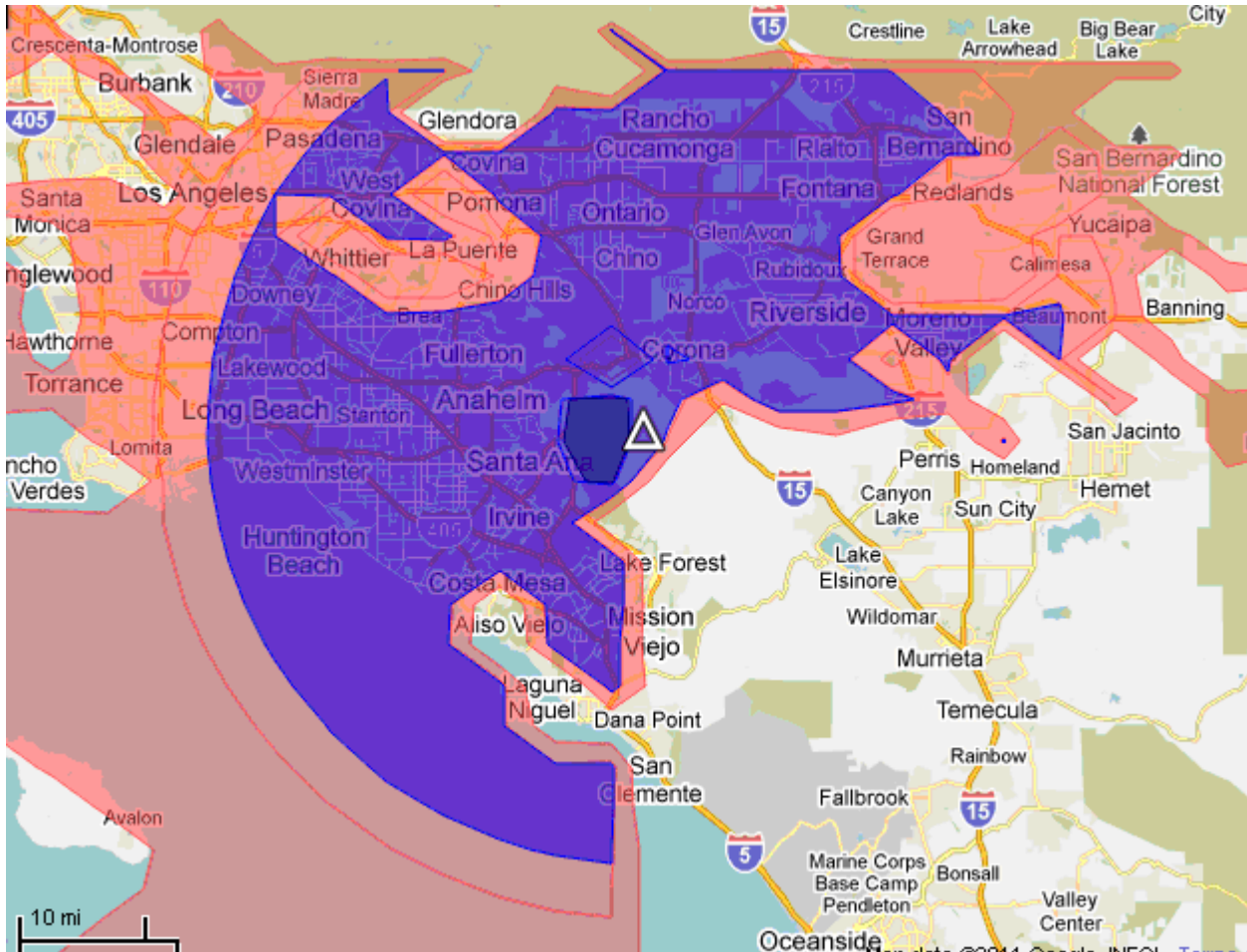
IF YOUR REGION IS INTERESTED IN CONSIDERING THIS IDEA, OR IF YOU HAVE SIGNIFICANT AMATEUR RADIO MEMBERS WHO MAY SHOW INTEREST, DUANE MARIOTTI WILL FUNCTION AS A CLEARING HOUSE TO ATTEMPT TO INITIATE THESE REGION TO REGION COMMUNICATIONS STRATEGIES.

SHOULD YOU HAVE QUESTIONS CONCERNING INTEGRATING AMATEUR RADIO INTO YOUR EMERGENCY PREPAREDNESS PROGRAM OR NEW FACILITY CONSTRUCTION, DUANE ALSO HAS EXPERIENCE TO ASSIST WITH CONFERENCE CALLS AND REFERENCE INFORMATION TO ASSIST THIS PROCESS.

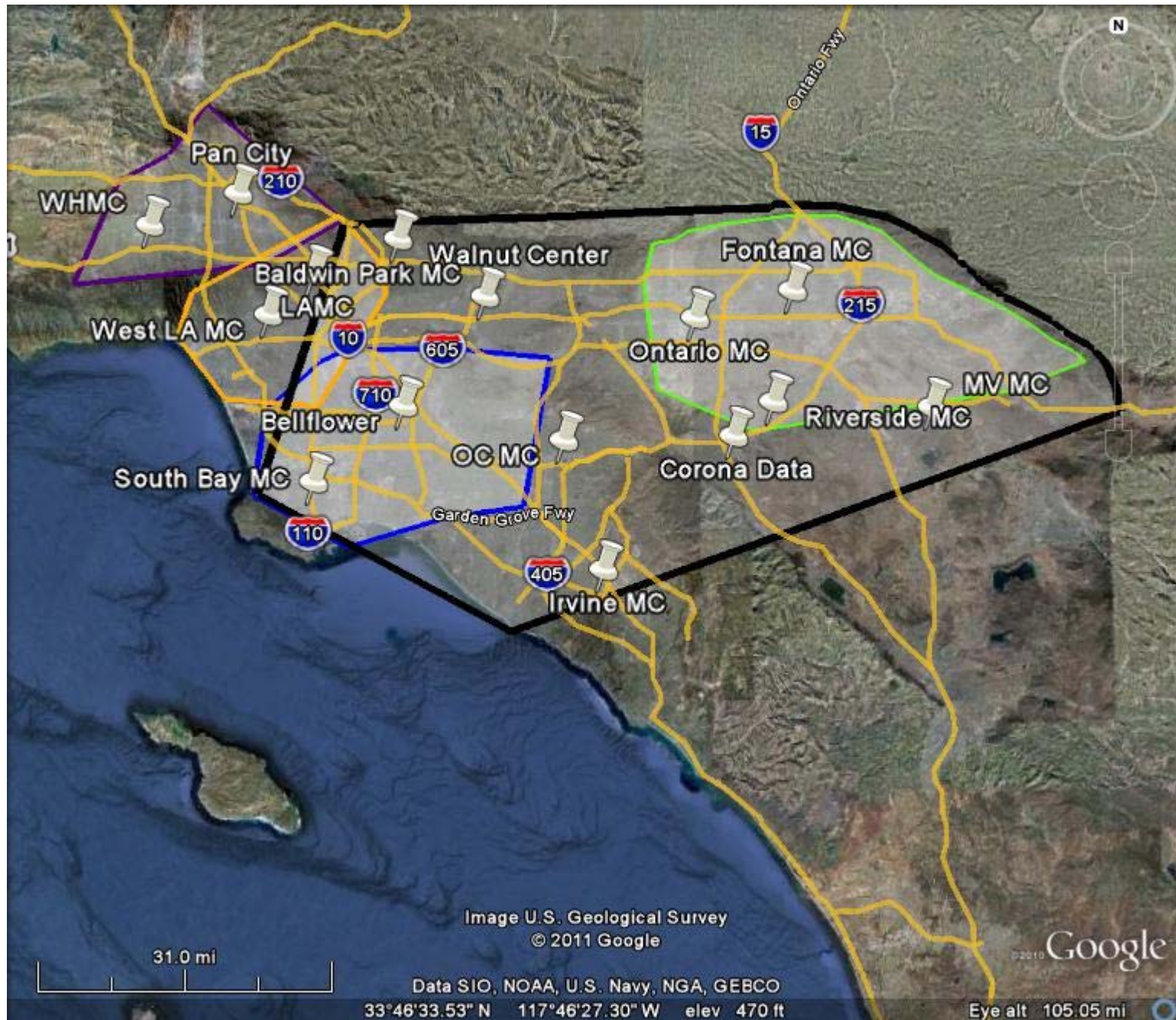
[DUANE.A.MARIOTTI@KP.ORG](mailto:DUANE.A.MARIOTTI@KP.ORG)



SANTIAGO 100 W UHF



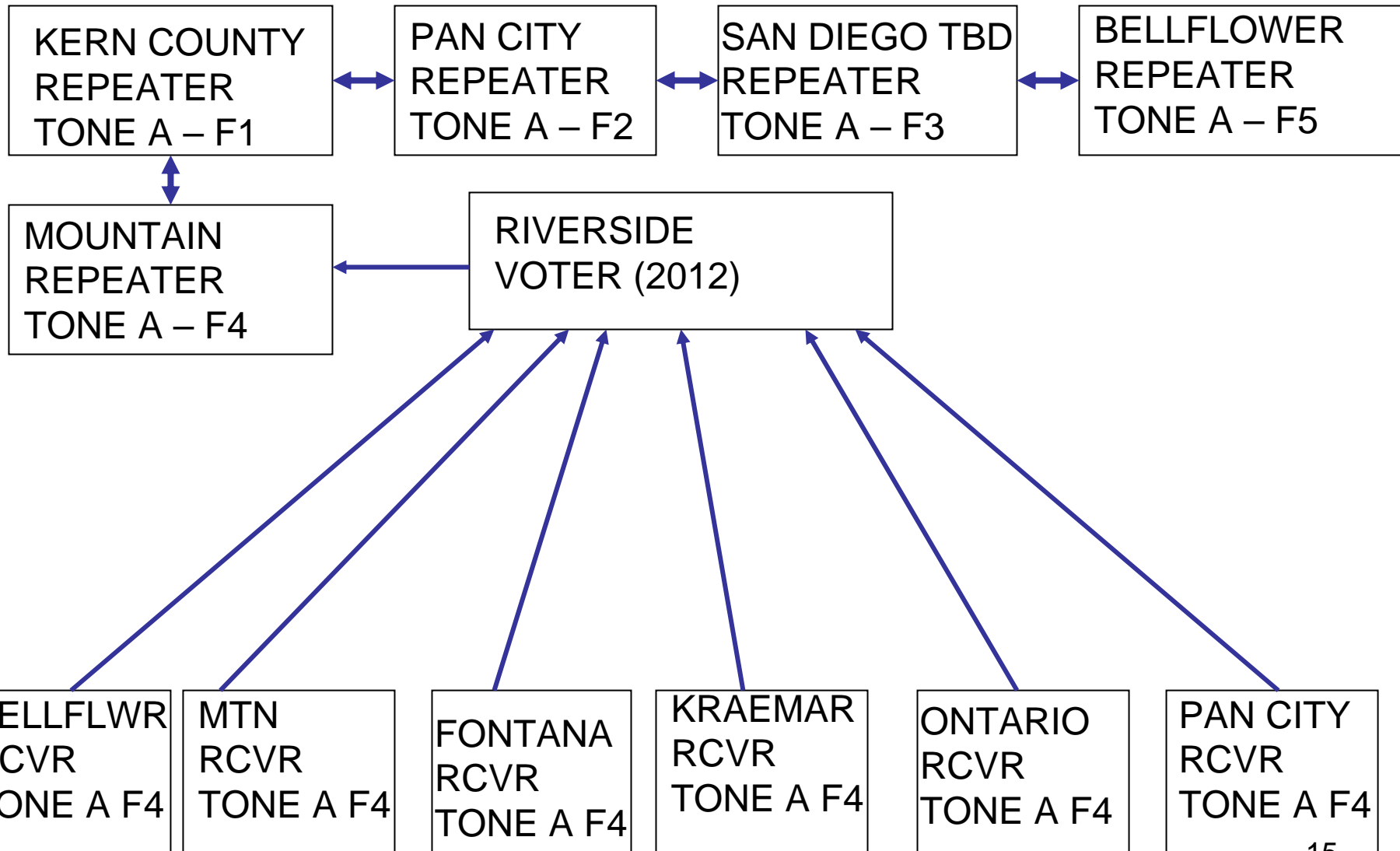
PLEASANTS PEAK 100W UHF



# KPARN INFRASTRUCTURE

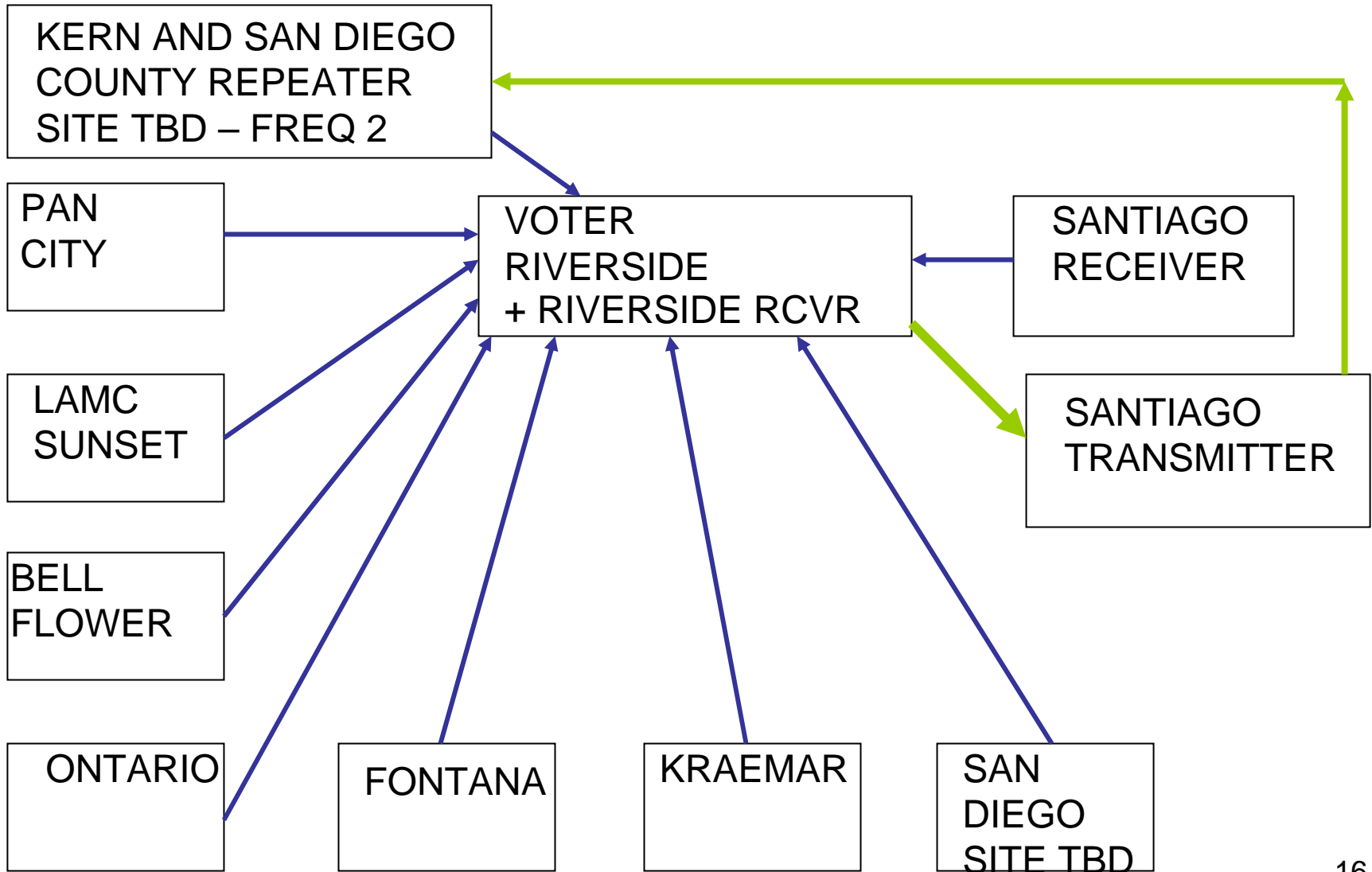
- Reliable Repeater System
  - Commercial Grade Equipment, Professional Installation
  - Emergency Generator Power
  - Battery Back-up (4 Hours) – UHF Only
- Coverage for all KP Medical Centers with installed equipment and rooftop antennas
  - San Diego County (Zion)
  - Riverside County (Riverside, Moreno Valley, Corona Data)
  - San Bernardino County (Fontana, Ontario)
  - Orange County (Anaheim, Irvine)
  - Los Angeles County (LAMC, Downey, West LA, Panorama City, Woodland Hills, South Bay, Baldwin Park)
  - Kern County (Future)
- Coverage with high power (50 watt / 35 watt) mobile radio from parking lot of KP Medical Centers
- Coverage of all KP Facilities (MOB's, etc) in Southern California with high power (50 watt / 35 watt) mobile radio

# SIX METER SYSTEM 2011



**ALL LINKS VIA ROIP, SANTIAGO TO RIVERSIDE VIA MICROWAVE**

# UHF VOTING SYSTEM 2011



**ALL LINKS VIA ROIP, SANTIAGO TO RIVERSIDE VIA MICROWAVE**

# 2011 BUDGET SUMMARY

- DOWNEY SIX METER REPEATER (LOCALLY FUNDED)  
LINK TO MOUNTAIN
- KERN COUNTY UHF AND SIX METER LINKED TO LA  
REPEATER SYSTEM
- ALTERNATE EOC ANTENNAS (HF+) AND BASIC RADIOS  
(6, 2, 440) (ORDERED)
- LAPTOP COMPUTER FOR PROGRAMMING RADIOS  
(DONE)
- ONTARIO UHF REPEATER (DONE)
- UHF VOTED RADIO SYSTEM (VALLEY, ONTARIO,  
MOUNTAIN) + (LAMC, KRAEMAR, FONTANA,  
BELLFLOWER) + (WEST LA, ?)
- HOPEFULLY – SF VALLEY SIX METER REPEATER  
LINKED TO MOUNTAIN



<b><u>MEDICAL CENTERS</u></b>	<b><u>KPARN STATUS</u></b>	<b><u>FUNDING</u></b>
BALDWIN PARK	NEW STATION INSTALLED NEXT TO HCC	REGIONAL
DOWNEY	NEW STATION INSTALLED NEXT TO HCC WITH HF	LOCAL
FONTANA	NEW STATION INSTALLED IN SECURITY - REMAINS AS SEC WITH NEW HOSP	LOCAL
NEW FONTANA	NEW DUAL OPERATOR STATION TO BE INSTALLED NEXT TO HCC	MLF
KERN COUNTY MOB	LOCAL PLANS TO FUND RADIOS PENDING REGIONAL INFRASTRUCTURE	LOCAL
RIVERSIDE	NEW STATION INSTALLED INSIDE HCC	REGIONAL
NEW ONTARIO	NEW STATION INSTALLED NEXT TO HCC	MLF
ORANGE COUNTY, IRVINE	NEW STATION INSTALLED NEXT TO HCC	MLF
ORANGE COUNTY, ANA	UPGRADED STATION AND ANTENNAS INSTALLED IN HCC	LOCAL
NEW ANAHEIM	NEW STATION TO BE INSTALLED NEXT TO HCC	MLF
LOS ANGELES MC	NEW DUAL OPERATOR STATION INSTALLED WITH BATTERY BACKUP (NO EP)	LOCAL
MORENO VALLEY	NEW STATION INSTALLED NEXT TO HCC	LOCAL
PAN CITY	TEMPORARY STATION INSTALLED IN SECURITY - RELOCATION IN PLANNING	REGIONAL
SAN DIEGO - ZION	NEW DUAL OPERATOR STATION INSTALLED NEXT TO HCC WITH HF	LOCAL
SOUTH BAY	NEW STATION INSTALLED - NEW LOCATION BY HCC AFTER CONSTRUCTION	REGIONAL
WEST LA	NEW PORTABLE STATION INSTALLED WITH HF	LOCAL
WOODLAND HILLS	TEMPORARY STATION INSTALLED IN TEMPORARY LOCATION	REGIONAL
REGIONAL EOC - PASADENA	NEW FOUR OPERATOR STATION INSTALLED	REGIONAL
REGIONAL DATA CENTER	NEW STATION INSTALLED NEXT TO HCC	LOCAL
SHERMAN WAY LAB	NEW "PORTABLE" STATION WITH HF ANTENNA FUNDED IN 2011	REGIONAL

# LAMC – SUNSET KPARN DUAL OPERATOR LOCATION



K.P.A.R.N. Radio Equipment mounted in Desk with Locking Hutch

<b><u>INFRASTRUCTURE</u></b>	<b><u>STATUS</u></b>	<b><u>FUNDING</u></b>
SANTIAGO SIX METER	OPERATIONAL - NEW REPEATER FUNDED FOR 2011	REGIONAL
SANTIAGO UHF	OPERATIONAL - NEW ANTENNA FUNDED FOR 2011	REGIONAL
LAMC UHF REPEATER	OFF AIR - TEMPORARILY REPROGRAMMED TO LAMC DISASTER PROGRAM	LOCAL
SHERMAN WAY UHF REPEATER	OFF AIR FOR INTEROP LINKING WITH SANTIAGO - PENDING	REGIONAL
SHERMAN WAY SIX MTR RCVR	OFF AIR FOR LINKING WITH SANTIAGO - PENDING	REGIONAL
BELLFLOWER UHF REPEATER	OPERATIONAL - UPGRADES FUNDED FOR 2011	LOCAL
BELLFLOWER 6 MTR REPEATER	NEW - BUDGETED FOR 2011 - PENDING INSTALLATION - LINK TO SANTIAGO	LOCAL
ONTARIO UHF REPEATER	OPERATIONAL	LOCAL
KERN COUNTY UHF REPEATER	FUNDED FOR 2011 - PENDING FINAL LOCATION EVALUATION	REGIONAL
KERN COUNTY 6 MTR REPEATER	FUNDED FOR 2011 - PENDING FINAL LOCATION EVALUATION	REGIONAL

## **2011 EMERGENCY COMMUNICATIONS TECHNICAL GOALS**

- KPARN - INSTALL ANTENNAS AND RADIOS AT SHERMAN WAY LAB - ALTERNATE EOC - REGIONALLY FUNDED
- KPARN - INSTALL UHF RADIO INFRASTRUCTURE IN KERN COUNTY - LINKED BACK TO LA - REGIONALLY FUNDED
- KPARN - INSTALL SIX METER INFRASTRUCTURE IN KERN COUNTY - LINKED BACK TO LA - REGIONALLY FUNDED
- KPARN - UPGRADE BELLFLOWER UHF REPEATER - LOCALLY FUNDED AND APPROVED
- KPARN - INSTALL SIX METER REPEATER AT BELLFLOWER - LOCALLY FUNDED AND APPROVED
- KPARN - LINK SIX METER REPEATERS
- KPARN - REACTIVATE SUNSET (LAMC) REPEATER - PENDING LOCAL DISASTER RADIO INSTALL
- KPARN - DETERMINE MOUNTAIN TOP LONG TERM STRATEGY - COST VS LOCATION
- KPARN - DETERMINE SITE IN SAN DIEGO COUNTY TO SUPPORT KPARN INFRASTRUCTURE
- KPARN - LINK UHF SYSTEM - VOTED IF FUNDING
- KPARN - COMPLETE NEW STATION AT NEW ONTARIO MC
- KPARN - COMPLETE RELOCATION OF PAN CITY STATION TO NEW HOSPITAL NEXT TO HCC
- KPARN - REORGANIZE REGIONAL EOC RADIO ROOM INCLUDE HEAR RADIO INSTALLATION - IF FUNDING

**MEMBERSHIP**



Since 1980, KPARN volunteers have provided two-way radio technology and amateur radio operators to Kaiser Permanente Medical Centers and regional facilities across Los Angeles, Riverside, Orange, San Diego and San Bernardino counties.



Learn More  
[www.kpam.org](http://www.kpam.org)  
[wb9rer@gmail.com](mailto:wb9rer@gmail.com)

### KPARN supports

- Baldwin Park Med Center
- Downey Medical Center
- Fontana Medical Center
- Kern County Medical Offices
- Riverside Medical Center
- Ontario Medical Center
- Orange County, Irvine
- Orange County, Anaheim
- Los Angeles Medical Center
- Moreno Valley Medical Center
- Panorama City Medical Center
- San Diego Medical Center
- South Bay Medical Center
- West LA Medical Center
- Woodland Hills Medical Center
- Regional EOC, Pasadena
- Regional Data Center, Corona



November 2010

## Kaiser Permanente Amateur Radio Network

Radio enthusiasts providing emergency response for area hospitals



Become a volunteer, and be the voice of safety in a community crisis



THANK YOU HAIM, KG6TFR

# **LEADERSHIP APPOINTMENTS**

- VICTOR – KI6SKJ – PAN CITY
- STEVE – KI6SUF – DOWNEY
- LEN – WB6QZK – BALDWIN PARK
- BILL – W8QZA – SAN DIEGO
- HAIM – KG6TFR - SHERMAN WAY  
ALTERNATE EOC
- NORM TOR – KB6AKF - PASADENA
- MANNY – KD6NIU - LAMC - SUNSET

# PASADENA ARC

- NO FORMAL RELATION BETWEEN ORGANIZATIONS
- PASADENA TO REMOVE ALL OF CLUB POSSESSIONS FROM RADIO ROOM
- NEW HF RADIO PURCHASED TO REPLACE CLUB OWNED
- HOPE TO FUND REWORK OF ANTENNAS AND OPERATING POSITIONS – **SUGGESTIONS?**
- HOPE TO ADD COMMERCIAL UHF AND VHF FOR KP HOSPITALS AND HEAR

# FCC REGULATIONS

- MOST OF CALIFORNIA AMATEUR UHF REPEATERS ONLY ALLOWED 50 WATTS TO ANTENNA FEED LINE
- REQUEST FOR WAIVER FROM FCC
- KPARN HAS REQUESTED SUCH WAIVER FOR UHF MOUNTAINTOP REPEATER – SEVERAL DISCUSSIONS – NO FORMAL APPROVAL TO DATE
- ALL OTHER KPARN UHF REPEATERS AT 25 WATTS – CONTINUOUS DUTY

# NOVEMBER 17 DRILL

- The hospital communicates with the local water, public utilities or emergency management authorities to determine the scope of the water system disruption including etiology, projected length of disruption and projected return to normal service.
- The hospital communicates hospital status, requests assistance and supplies, and obtains situation and community status with the MHOAC, County POC, Emergency Operations Center and other area hospitals.
- The hospital utilizes a communication plan to notify, maintain communications with and exchange appropriate information with response partners, including local health department, EMS providers, local EMS Agency, other health care providers, water and utility authorities and emergency management authorities.

# **LEAN FORWARD**

---

**PREPARE AND  
ADMINISTRATIVELY MOBILIZE  
BEFORE THE MISSION BASED  
ON THE INFORMATION YOU  
HAVE**

**EARTHQUAKE**

**FIRE SEASON**

**WIDE AREA POWER DISRUPTION**

# KP AND KPARN

- KP IS A WORLD LEADING HEALTHCARE SYSTEM THAT HAS INVESTED TENS OF THOUSANDS OF DOLLARS ON RADIO EQUIPMENT AND INSTALLATION AND DEDICATED SPACE CREATING A REDUNDANT AND RELIABLE RESERVE COMMUNICATION SYSTEM BASED ON AMATUER RADIO
- THE SUPPORT FROM KP SENIOR MANAGEMENT AND THE “THREAT ASSESMENT TEAM” IS SIGNIFICANTLY APPRECIATED
- THIS IS A SIGNIFICANT COMMITMENT TO EMERGENCY PREPAREDNESS THAT AS KPARN MEMBERS MUST ASSURE WE SUPPORT