



Side View of Cabinet Anchored to Wood Floor



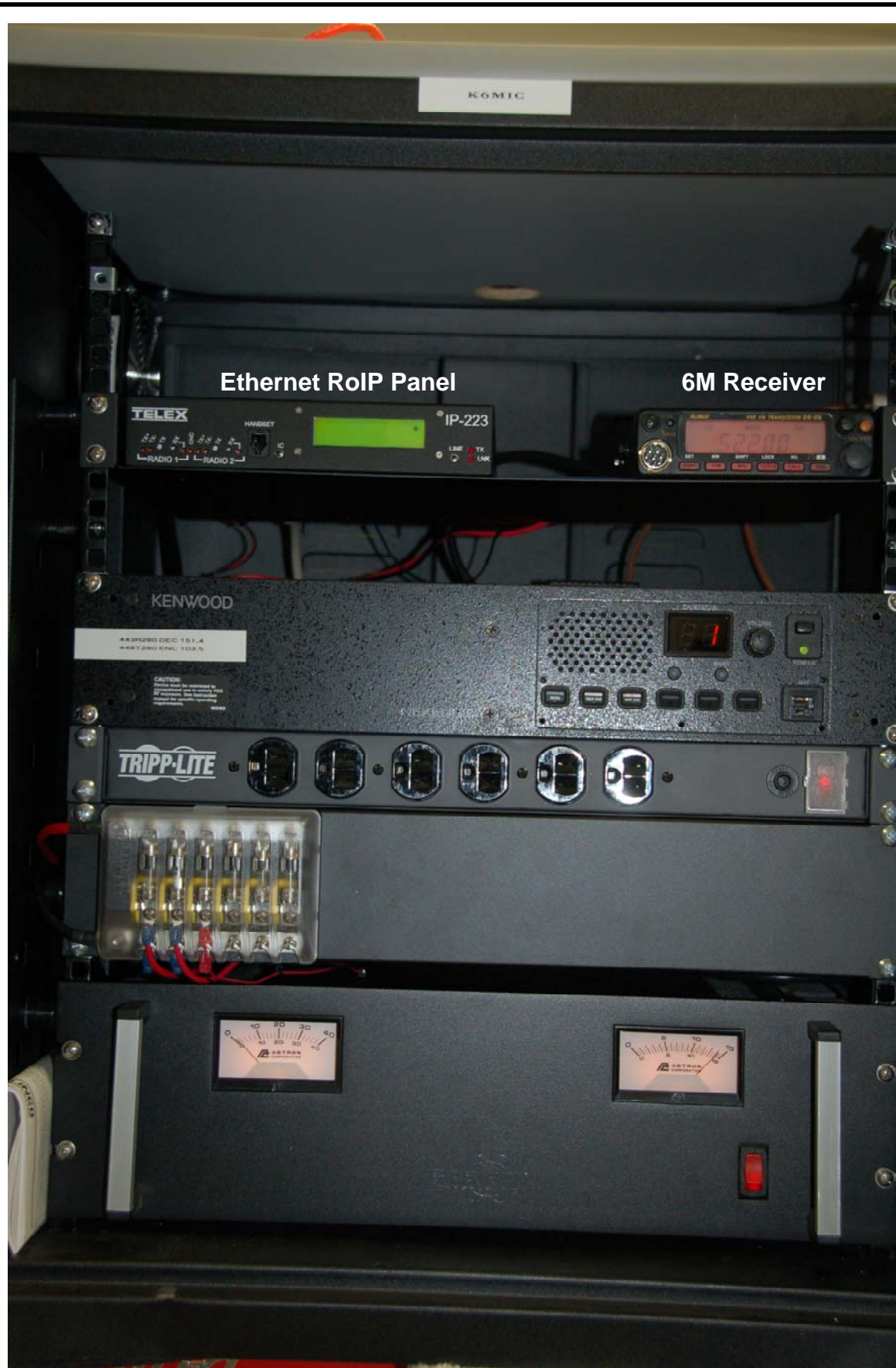
**Connections to KPIT
Network, Antenna, and A.C.
(E-Power Outlet)**

Antenna EMP Connection Detail





Roof Top Antenna



Ethernet RoIP Panel

6M Receiver

See "white" Labels on Individual components

UHF Repeater

AC Outlet Strip

Fuse Panel w/Spares

Power Supply
35-Amp
Continuous Duty
w/Battery
Backup

RIVCOMM, LLC

1330 Dodson Way Riverside, CA 92507
951.328.0211 Voice 951.328.8491 FAX

June
2010

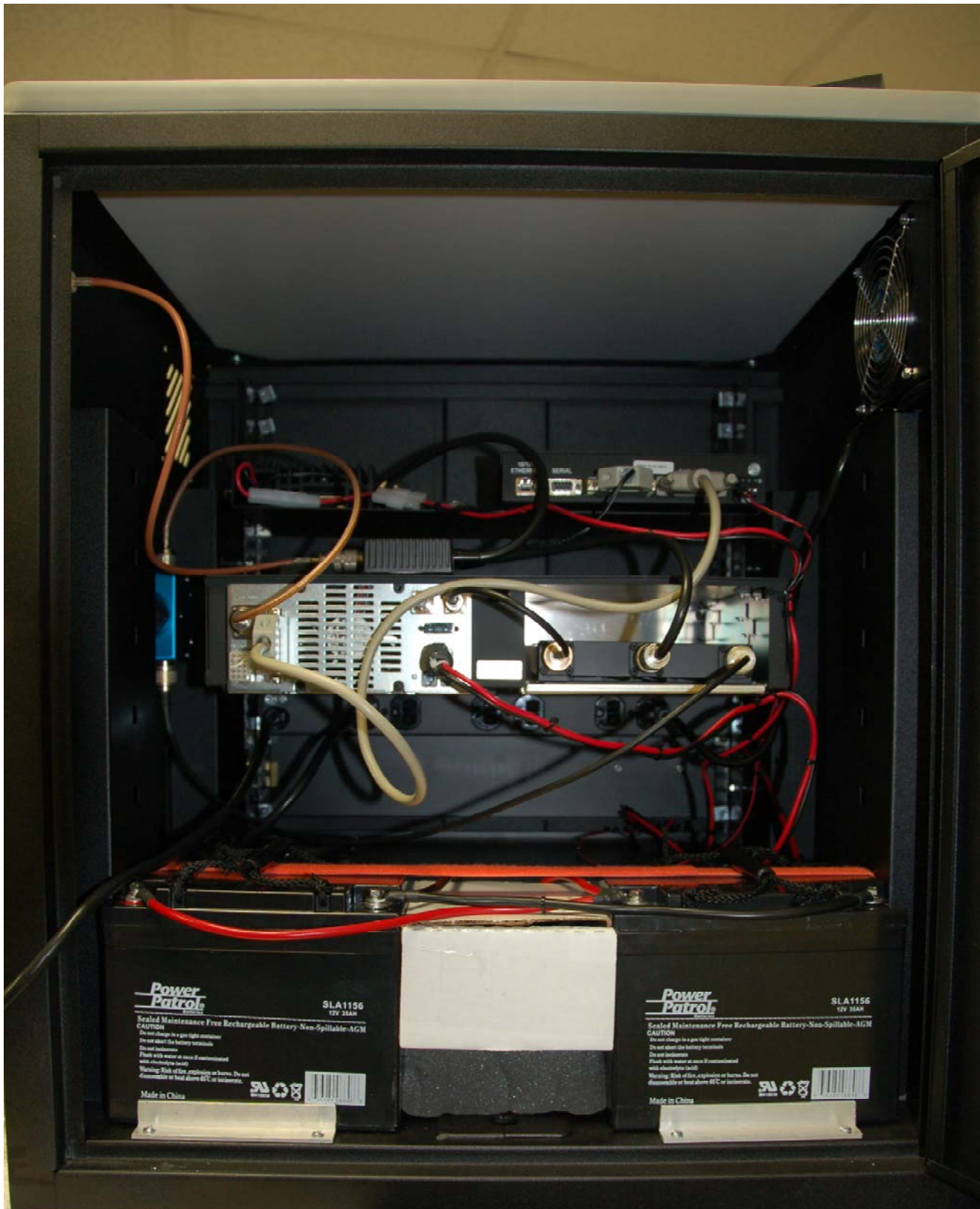
Date

CJR

Made

**Kaiser Permanente
Sherman Way Lab RoIP Cabinet**

Front View
Location



6M/RoIP Shelf

UHF Repeater and Duplexer

Battery Backup Cells

RoIP Cabinet, Rear View

Sherman Way

IP223 Information

Serial Number: 23130510

Firmware: V4.4

IP 10.209.112.255

Gateway: 10.209.112.1

Subnet Mask: 255.255.254.0

Multicast: 225.8.11.81

Ports:

RX	TX	Function
1054	1072	Receive Only- 6M Alinco Radio
1055	1073	UHF Repeater

Kenwood

Model: NXR810

S/N A9B00043

448T280 Enc 103.5 Wideband

443R280 Dec 151.4 Wideband

CWID: K6MIC Programmed for 15min w/CTCSS Encode

Alinco

Model: DR-06T

S/N: NA

52R200 Dec 141.3