

RIVCOMM, LLC

Specialists in Wireless Communications

Kaiser Permanente Santiago Repeater

Repeater Manufacturer: Daniels Electronics

Model Number: SR-39-1

Serial Number: 112629

Receiver Model: VR-3H045-SWA200

Frequency: 52.200MHz

Sens: 0.1uV

Transmitter Model: VT-3H045-SWA300

Frequency: 52.700MHz

Output: 2.0Watts

Audio Controller Model: AC-3E

CTCSS Freq.: 82.5Hz

CWID: K6ARN

Primary R.F. Power Amplifier Manufacturer: TPL

Model Number: PA1-3AF-HMS-DE1

Serial Number: 1025

Rated Input Power: 2 Watts

Rated Output Power: 250 Watts

Measured Output Power: 252 Watts

(measured at P.A. output)

Measured Output Power: 175 Watts

(measured through Duplexer)

Reflected Power: 8 Watts

(measured at P.A. output)

Duplexer Manufacturer: Telewave

Model Number: TPRD-0584

Type: Bandpass/Bandreject

Loss Measured Through Receive Side: 3 dB

Loss Measured Through Transmit Side: 3 dB

Intermodulation Panel

Model Number: LB73525H

Manufacturer: EMR

Serial Number: 100423-001

Ethernet RoIP Panel

Model Number: IP223

Manufacturer: Telex

Serial Number: 22095

Note: All interconnecting RF cables are made using Andrew FSJ4-50B.

Revised 07-2010

1330 Dodson Way Riverside, CA 92507
951.328.0211 951.328.8491 Fax

RIVCOMM, LLC

Specialists in Wireless Communications

Kaiser Permanente 440 MHz Santiago Repeater

Repeater Manufacturer: Kenwood

Model Number: TKR-840

Receiver:

Sens: 0.2uV

Transmitter

Output: 20 Watts

CWID: K6MIC

Serial Number: 092116007

Frequency: 443.2800MHz

Decode: 123.0Hz

Frequency: 448.2800MHz

Encode: 103.5Hz

R.F. Power Amplifier Manufacturer: TPL

Model Number: PA6-1FE-RXRF

Rated Input Power: 15-30 Watts

Measured Output Power: 85 Watts

Measured Output Power: 78 Watts

Reflected Power: <1 Watt

Serial Number: 1150

Rated Output Power: 75-100 Watts

(measured at P.A. output)

(measured through Duplexer)

(measured at P.A. output)

Duplexer Manufacturer: Sinclair

Model Number: Q3220C-2

Type: Bandpass/Bandreject

Loss Measured Through Receive Side: 1.5 dB

Loss Measured Through Transmit Side: 1.5 dB

Additional Receive Side Filtering

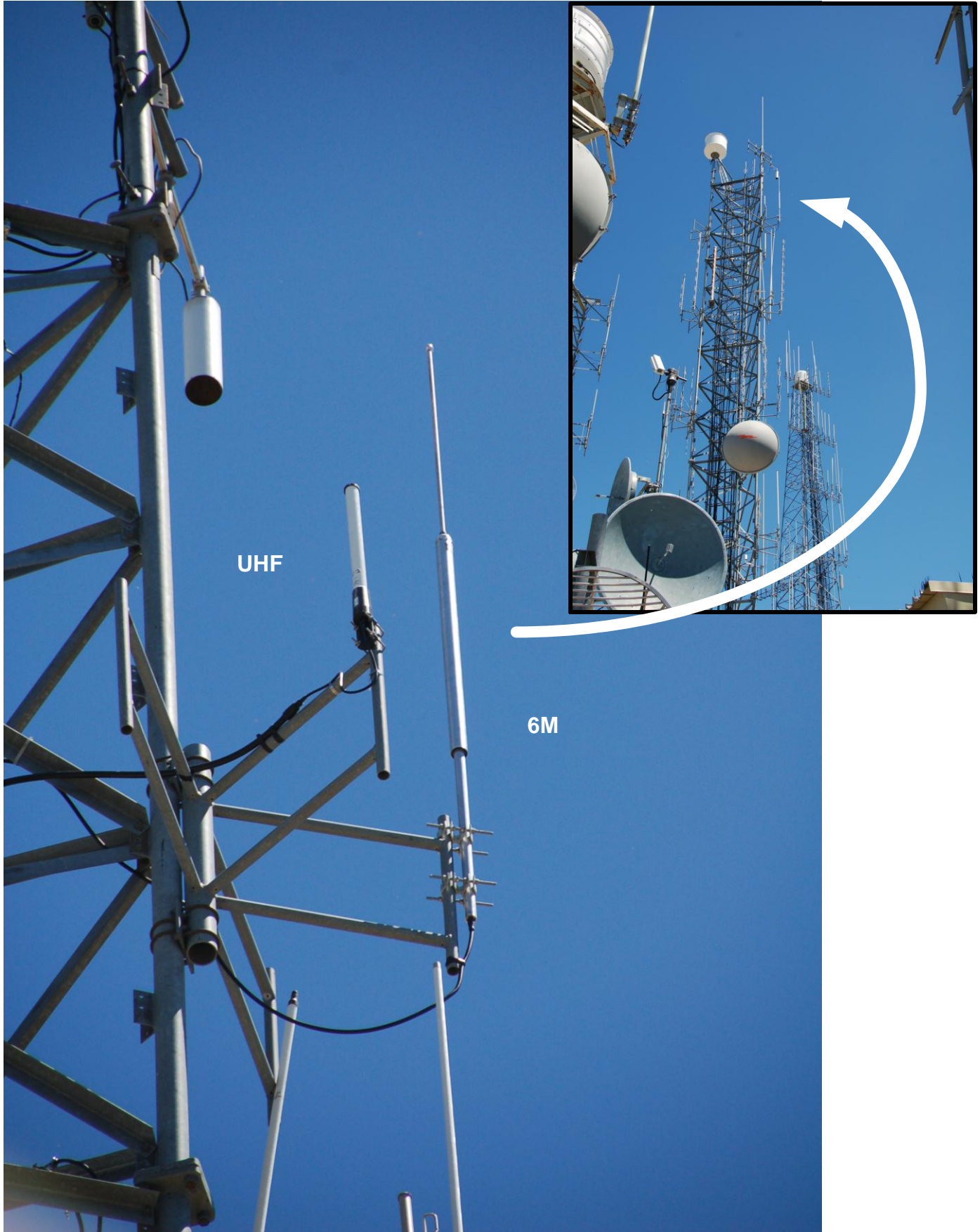
Model Number: TWPC-4508

Type: Bandpass (tune for 443.280)

Insertion Loss: Both loops set for 1dB

Note: Used, removed from other KP location retuned 07-2010

Revised 07-2010



UHF

6M

RIVCOMM, LLC

1330 Dodson Way Riverside, CA 92507
951.328.0211 Voice 951.328.8491 FAX

July 2010

Date

CJR

Made

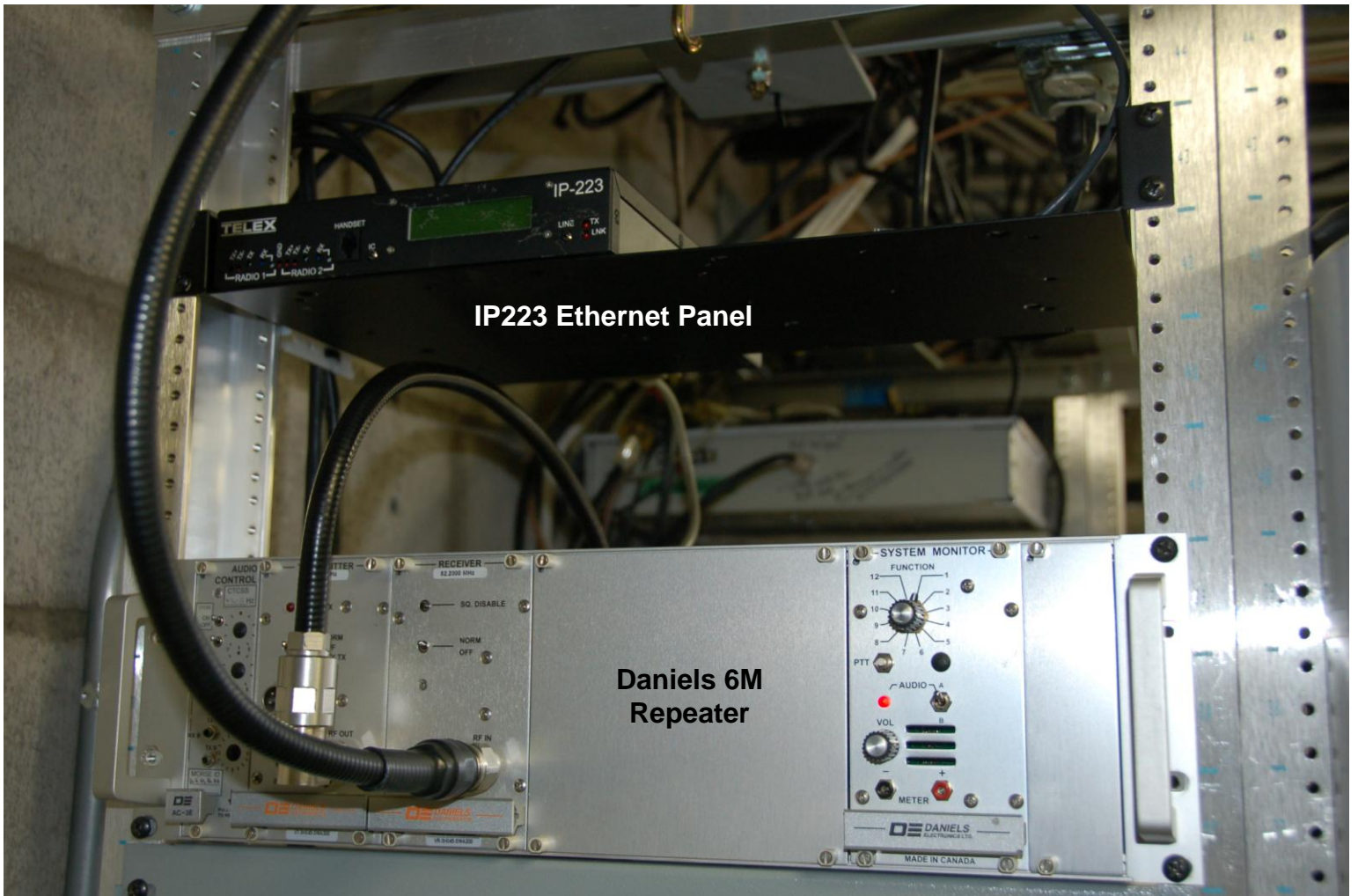
K.P.A.R.N.

Santiago PK

Location



Equipment Rack Top Section



IP223 Ethernet Panel

**Daniels 6M
Repeater**

Equipment Rack Center Section



6M
Intermodulation
Panel

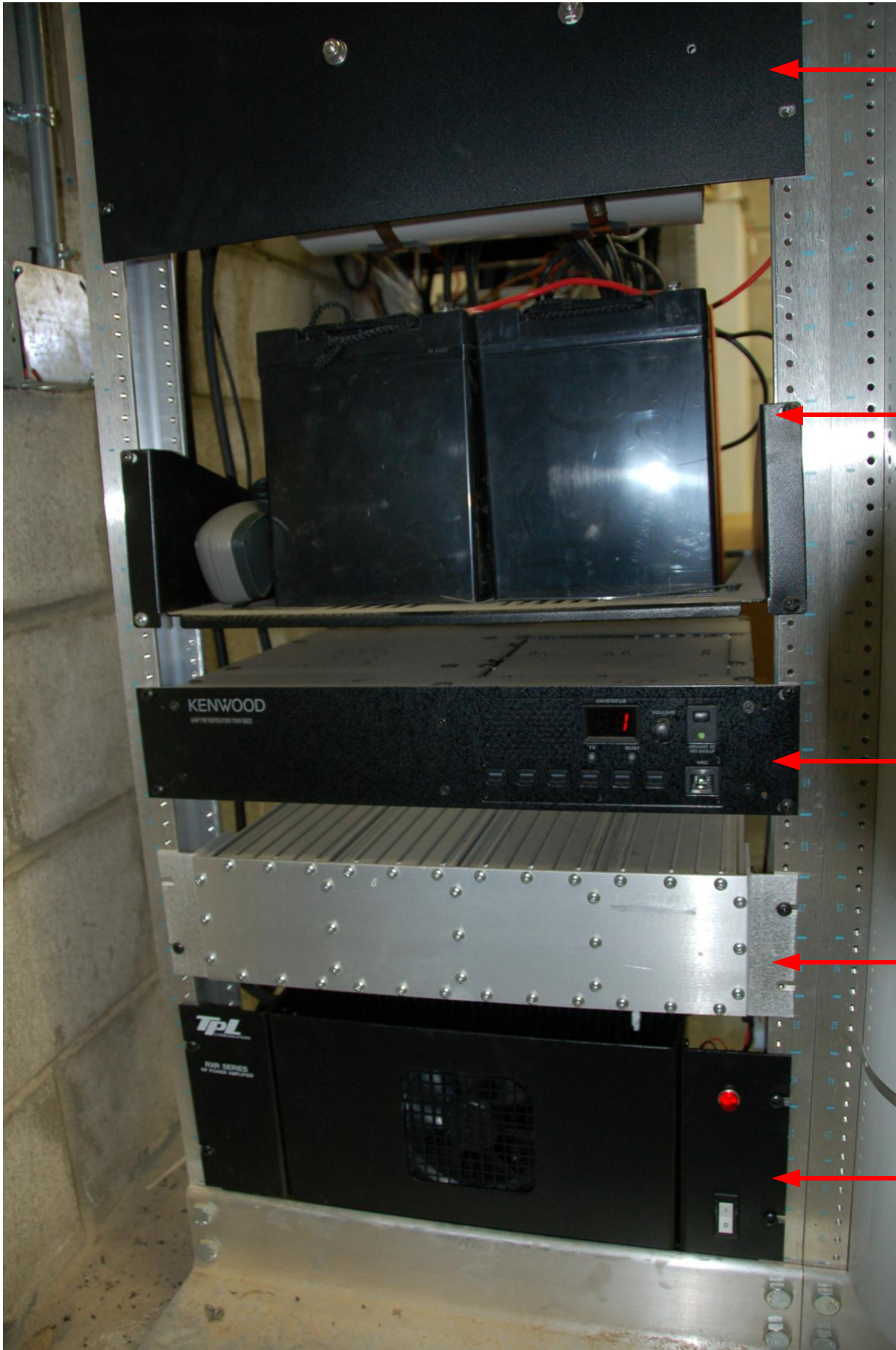
6M
250 Watt
Amplifier

60A
D.C. Power
Supply w/Battery
Charger/Revert

A.C. Power Strip

440 MHz
Bandpass
Cavity
Filtering

Equipment Rack Lower Section



440 MHz
Bandpass
Cavity
Filtering

D.C.
Battery
Backup
Cells

TKR-850
440MHz
Repeater

440MHz
Duplexer

440MHz
100 Watt
Amplifier



data communications

RAD Data Communications, Inc.

900 Corporate Drive
Mahwah, NJ 07430
Tel: 201-529-1100
Toll Free: 800-444-7234
Fax: 201-529-5777



RADCare Service Activation Certificate

Service ID : 1756
Rivcomm, Inc
1330 Dodson Way
Riverside, California 92507
USA

Attention:
Chuck Rich
(951) 328-0211
crich@rivcomm.net

	Service Level 1	Service Level 2	Service Level 3
Extended Warranty Coverage	✓	✓	✓
Support available 24/7 for all priority technical calls on downed, faulty or degraded RAD products.	✓	✓	✓
Replacement parts guaranteed to ship by next business day.		✓	✓
Dispatch of field technician for on-site support within four hours as required.			✓

RAD welcomes you to our Service Program and appreciate your choice of vendor.

Whenever a Service call is required, please be prepared to provide the following:

Service ID, serial and part numbers, contact name and telephone numbers.

RADcare Service Telephone Numbers:

During our normal working hours of 9am to 6pm EST / Monday through Friday	(800) 444-7234 option 3 From outside US: (201) 529-1100 option 3
Monday through Friday between the hours of 6pm to 9am EST and weekends	(866) 262-7778 From outside US: (773) 353-1290

The RADcare Call Center will arrange for a technician to contact the customer. This process is performed through predefined internal procedures and escalations. The average call back time is between 30 to 60 minutes from inception.

Equipment List

Service Level	Product/PartNumber	Serial Number	Activation Date	Valid Through
2	AIRMUX-400/ODU/F2458F/50M/EXT	BFC580E505000598	6/10/2010	6/9/2012
2	AIRMUX-400/ODU/F2458F/50M/EXT	BFC580E505000599	6/10/2010	6/9/2012

Notes

You agree to abide by the Term and Conditions of our RADCare Service Level Programs. You may view these Terms and Conditions by visiting <http://www.radcare.com>.